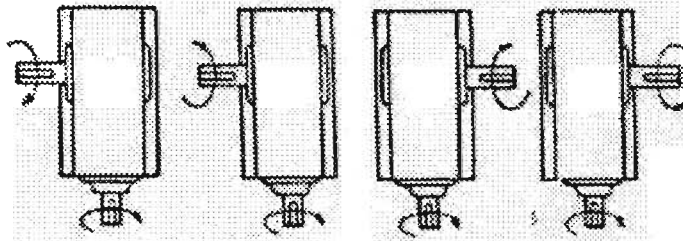
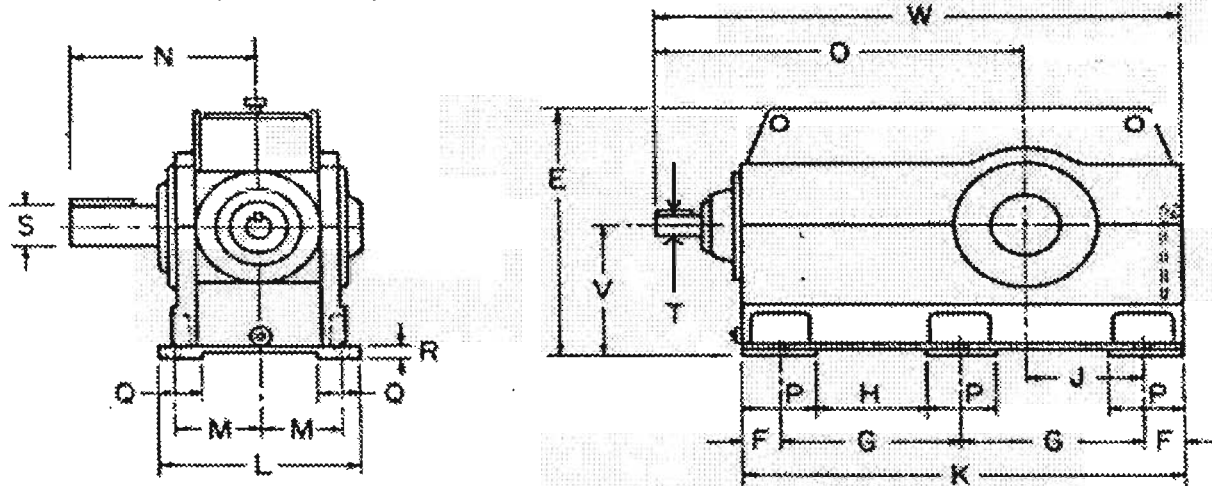


KLISTOFF EQUIPMENT & MACHINERY, INC.

Right Angle Spiral Bevel Gear Speed Reducer Dimensional Comparison Sheet



Note: When replacing right angle bevel geared units you will want to be aware of the relative rotations of the input and output shafts.



OBSOLETE UNIT

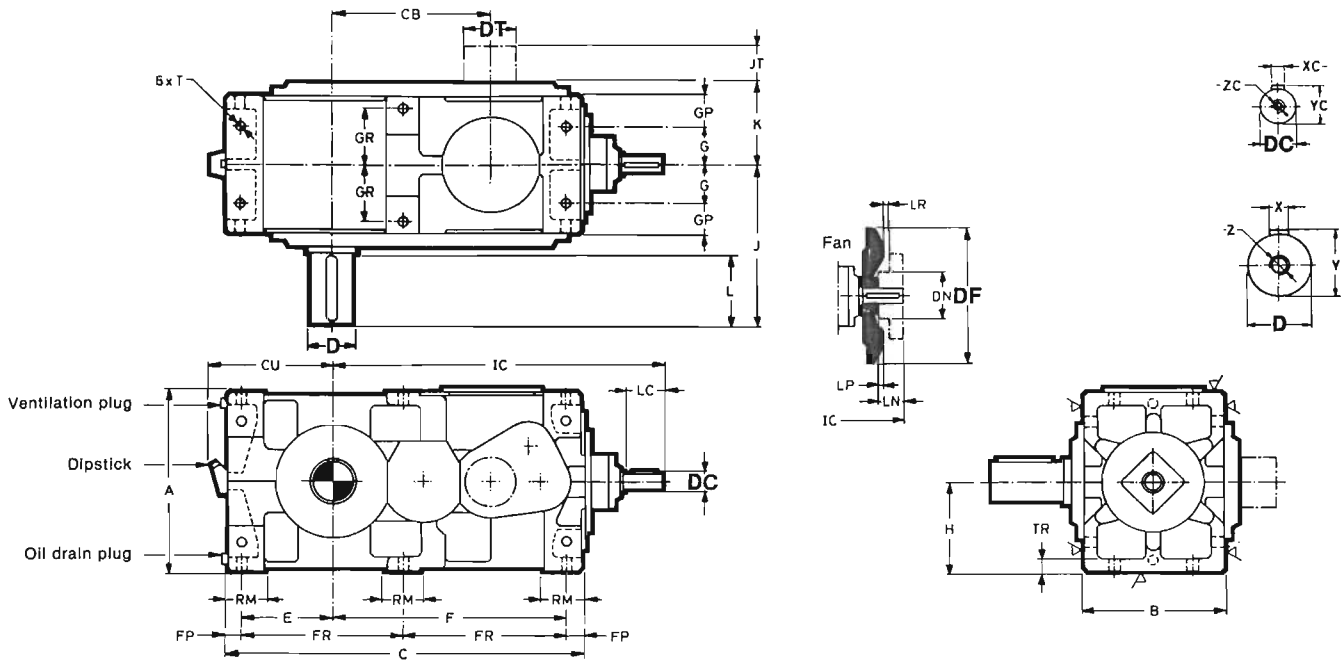
REPLACEMENT UNIT

	OBSOLETE UNIT	REPLACEMENT UNIT
Model		RDK33F-BNN 31.5
Ratio		32.72:1
Rating@ 1750 RPM		890 HP
Thermal		600 HP w/fan
V		17 23/32
G		30 45/64
J		16 17/32
K		66 5/32
L		25 9/16
M		7 15/32
N		29 1/8
O		59 3/8
S		8.000
T		3.000
W		80 1/8
Weight		8,000

Hansen PowerPlus

RD^A
33
LJ

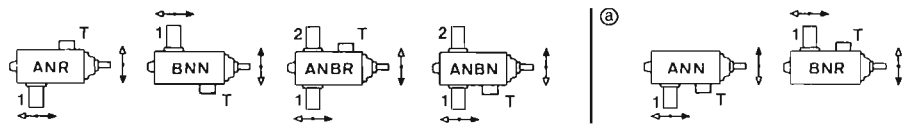
Housing CENTRELINE SPLIT CAST IRON	Low speed shaft SOLID - HORIZONTAL	Shaft configuration RIGHT-ANGLE	Stages 3
--	--	---	--------------------



Standard shaft arrangements (Top view)

- 1 - standard shaft extension
- 2 - additional shaft extension
- T - backstop

Ⓐ These shaft arrangements to be chosen only if required with regard to direction of rotation of shafts and/or overhung loads on low speed shaft.



Type	A	B	C	CU	E	F	FP	FR	G	GP	GR	H	IC	J	K	RM	T	TR	Weight lb	Oil US gal.
RDA33	12 ¹ / ₁₆	9 ¹ / ₁₆	23 ³ / ₄	9 ¹ / ₁₆	6 ¹ / ₁₆	14 ¹⁵ / ₁₆	1	10 ⁵ / ₁₆	2 ³ / ₈	2 ⁹ / ₃₂	3 ¹⁵ / ₁₆	6 ³ / ₃₂	24 ¹ / ₄	11 ³ / ₄	5 ¹³ / ₁₆	2 ³ / ₈	3 ¹ / ₄	1	360	1.6
RDB33	13 ³ / ₄	10 ⁵ / ₁₆	26 ²⁵ / ₃₂	10 ¹ / ₄	7 ⁷ / ₃₂	17 ¹ / ₈	1 ¹ / ₁₆	12 ¹³ / ₆₄	2 ¹ / ₄	2 ⁹ / ₁₆	4 ¹ / ₁₆	6 ⁷ / ₈	27 ³ / ₄	13 ³ / ₈	6 ¹ / ₂	2 ³ / ₄	1 ⁵ / ₁₆	1 ¹ / ₈	530	2.1
RDC33	15 ³ / ₄	12 ¹ / ₁₆	30 ¹ / ₁₆	11 ¹ / ₄	8 ¹ / ₁₆	19 ¹ / ₈	1 ¹ / ₁₆	13 ³ / ₃₂	3 ³ / ₃₂	2 ¹⁵ / ₁₆	5 ¹ / ₁₆	7 ¹ / ₈	31 ¹ / ₄	14 ⁷ / ₁₆	7 ⁷ / ₈	3 ³ / ₈	1 ¹ / ₈	1 ¹ / ₁₆	800	3.2
RDD33	17 ¹ / ₁₆	13 ³ / ₄	35 ¹ / ₃₂	12 ³ / ₈	9 ¹ / ₁₆	22 ²⁷ / ₃₂	1 ¹ / ₈	16 ⁹ / ₆₄	3 ³ / ₄	3 ³ / ₈	5 ⁵ / ₈	8 ²⁷ / ₃₂	36 ¹ / ₈	17 ¹ / ₈	8 ¹ / ₄	3 ¹ / ₂	1 ¹ / ₈	1 ¹ / ₄	1100	5.3
RDE33	20 ⁷ / ₈	15 ³ / ₄	40 ¹ / ₃₂	14	10 ⁵ / ₁₆	26 ²⁵ / ₃₂	1 ¹ / ₁₆	18 ⁴⁵ / ₆₄	4 ¹ / ₃₂	3 ¹⁷ / ₃₂	6 ⁹ / ₁₆	10 ¹ / ₁₆	39 ⁷ / ₁₆	18 ¹ / ₄	9 ¹ / ₄	4	1 ¹ / ₈	1 ¹ / ₈	1700	8
RDF33	23 ³ / ₈	17 ¹ / ₁₆	46 ¹ / ₈	15 ⁵ / ₈	12	30 ¹ / ₂	1 ¹¹ / ₁₆	21 ¹ / ₄	4 ²³ / ₃₂	3 ¹⁵ / ₁₆	7 ⁷ / ₈	11 ¹³ / ₁₆	45 ¹ / ₁₆	20 ¹ / ₄	10 ¹ / ₄	4 ³ / ₈	1 ¹ / ₈	1 ¹ / ₁₆	2500	13
RDG33	26 ⁷ / ₈	19 ¹ / ₄	50 ¹ / ₁₆	17	13 ³ / ₁₆	33 ³ / ₄	2	23 ¹ / ₃₂	5 ¹ / ₈	4 ¹ / ₂	8 ¹ / ₈	13 ³ / ₁₆	46 ³ / ₄	23 ¹ / ₁₆	11 ¹ / ₄	5 ¹ / ₈	1 ¹ / ₁₆	1 ¹ / ₄	3500	16
RDH33	31 ¹ / ₂	22 ¹ / ₁₆	59 ¹ / ₈	18 ⁷ / ₈	14 ³ / ₃₂	39 ²⁵ / ₃₂	2 ¹ / ₁₆	27 ³ / ₈	6 ⁵ / ₁₆	4 ²⁹ / ₃₂	9 ¹ / ₁₆	15 ³ / ₄	53 ³ / ₈	25 ¹ / ₂	12 ¹³ / ₁₆	5 ¹ / ₂	1 ¹ / ₁₆	2	5000	32
RDHJ33	31 ¹ / ₂	22 ¹ / ₁₆	59 ¹ / ₈	18 ⁷ / ₈	14 ³ / ₃₂	39 ²⁵ / ₃₂	2 ¹ / ₁₆	27 ³ / ₈	6 ⁵ / ₁₆	4 ²⁹ / ₃₂	9 ¹ / ₁₆	15 ³ / ₄	53 ³ / ₈	27 ¹ / ₁₆	12 ¹³ / ₁₆	5 ¹ / ₂	1 ¹ / ₁₆	2	5000	32
RDK33	35 ¹ / ₁₆	25 ¹ / ₁₆	66 ³ / ₃₂	20 ³ / ₄	16 ¹ / ₃₂	44 ⁷ / ₈	2 ³ / ₈	30 ⁴⁵ / ₆₄	7 ¹ / ₃₂	5 ⁵ / ₁₆	11 ¹ / ₃₂	17 ²³ / ₃₂	59 ³ / ₈	29 ¹ / ₈	14 ⁹ / ₁₆	5 ⁷ / ₈	1 ¹ / ₁₆	2 ¹ / ₈	7000	45
RDKJ33	35 ¹ / ₁₆	25 ¹ / ₁₆	66 ³ / ₃₂	20 ³ / ₄	16 ¹ / ₃₂	44 ⁷ / ₈	2 ³ / ₈	30 ⁴⁵ / ₆₄	7 ¹ / ₃₂	5 ⁵ / ₁₆	11 ¹ / ₃₂	17 ²³ / ₃₂	59 ³ / ₈	29 ¹ / ₈	14 ⁹ / ₁₆	5 ⁷ / ₈	1 ¹ / ₁₆	2 ¹ / ₈	7000	45
RDL33	39 ³ / ₈	27 ¹ / ₁₆	75 ¹ / ₃₂	23 ¹ / ₄	18 ³ / ₃₂	51 ¹ / ₈	2 ¹ / ₁₆	35 ³ / ₆₄	8 ³ / ₃₂	5 ¹ / ₁₆	12	19 ¹ / ₁₆	68 ¹ / ₁₆	30 ¹ / ₁₆	15 ³ / ₄	6 ¹ / ₄	1 ⁷ / ₈	2 ³ / ₈	9500	61
RDLJ33	39 ³ / ₈	27 ¹ / ₁₆	75 ¹ / ₃₂	23 ¹ / ₄	18 ³ / ₃₂	51 ¹ / ₈	2 ¹ / ₁₆	35 ³ / ₆₄	8 ³ / ₃₂	5 ¹ / ₁₆	12	19 ¹ / ₁₆	68 ¹ / ₁₆	32 ¹ / ₁₆	15 ³ / ₄	6 ¹ / ₄	1 ¹ / ₈	2 ³ / ₈	9500	61

Type	Low speed shaft					High speed shaft					Fan					Backstop		
	D	L	X	Y	Z UNC	DC	LC*	XC	YC	ZC UNC	DF	DN max	LN	LP	LR min	CB	DT max	JT max
RDA33	2.750	5 ¹ / ₂	5 ⁵ / ₈	3.027	3 ³ / ₄	1.125	2 ³ / ₈	1 ¹ / ₄	1.236	3 ³ / ₈	7 ¹ / ₁₆	3 ⁹ / ₁₆	1 ¹ / ₂	5 ⁵ / ₁₆	3 ³ / ₄	10.118	5	4 ³ / ₈
RDB33	3.125	6 ³ / ₄	3 ³ / ₄	3.454	3 ³ / ₄	1.250	3 ³ / ₈	1 ¹ / ₄	1.362	1 ¹ / ₂	11 ¹ / ₈	5 ¹ / ₂	2	3 ³ / ₈	1	11.614	6	5 ⁵ / ₈
RDC33	3.625	6 ³ / ₄	7 ¹ / ₈	4.009	1	1.500	3 ³ / ₈	3 ³ / ₈	1.664	3 ³ / ₈	11 ¹ / ₈	5 ¹ / ₂	2	3 ³ / ₈	1	13.583	7 ¹ / ₈	6 ³ / ₈
RDD33	4.250	8 ¹ / ₄	1	4.690	1	1.750	4 ¹ / ₄	3 ³ / ₈	1.917	3 ³ / ₈	11 ¹ / ₈	5 ¹ / ₂	3 ³ / ₈	3 ³ / ₈	1	15.551	8 ¹ / ₄	6 ³ / ₄
RDE33	4.875	8 ¹ / ₄	1 ¹ / ₄	5.419	1	2.000	4 ¹ / ₄	1 ¹ / ₂	2.218	3 ³ / ₄	11 ¹ / ₈	5 ¹ / ₂	3 ³ / ₈	3 ³ / ₈	1	18.071	9 ³ / ₈	7 ⁷ / ₈
RDF33	5.625	9 ¹ / ₈	1 ¹ / ₂	6.273	1 ¹ / ₄	2.375	5 ¹ / ₂	3 ³ / ₈	2.646	3 ³ / ₄	14 ⁷ / ₁₆	6 ¹ / ₈	4 ¹ / ₈	1 ¹ / ₂	1 ¹ / ₁₆	20.669	9 ³ / ₈	7 ³ / ₄
RDG33	6.375	11 ¹ / ₄	1 ¹ / ₂	7.036	1 ¹ / ₄	2.375	5 ¹ / ₂	3 ³ / ₈	2.646	3 ³ / ₄	14 ⁷ / ₁₆	6 ¹ / ₈	4 ¹ / ₈	1 ¹ / ₂	1 ¹ / ₁₆	22.323	11	8 ³ / ₄
RDH33	7.125	11 ³ / ₄	1 ³ / ₄	7.766	1 ¹ / ₄	2.625	5 ¹ / ₂	3 ³ / ₈	2.900	3 ³ / ₄	14 ⁷ / ₁₆	6 ¹ / ₈	4 ¹ / ₈	1 ¹ / ₂	1 ¹ / ₁₆	26.378	10 ¹ / ₈	9 ¹ / ₈
RDHJ33	7.375	13 ³ / ₄	1 ³ / ₄	8.020	1 ¹ / ₄	2.625	5 ¹ / ₂	3 ³ / ₈	2.900	3 ³ / ₄	14 ⁷ / ₁₆	6 ¹ / ₈	4 ¹ / ₈	1 ¹ / ₂	1 ¹ / ₁₆	26.378	10 ¹ / ₈	9 ¹ / ₈
RDK33	8.000	13 ³ / ₄	2	8.623	1 ¹ / ₄	3.000	5 ¹ / ₂	3 ³ / ₄	3.327	3 ³ / ₄	19 ¹³ / ₁₆	7 ¹ / ₈	3 ¹ / ₁₆	1	1 ¹ / ₁₆	29.843	11 ¹ / ₈	10 ¹⁵ / ₁₆
RDKJ33	8.625	13 ³ / ₄	2	9.257	1 ¹ / ₄	3.000	5 ¹ / ₂	3 ³ / ₄	3.327	3 ³ / ₄	19 ¹³ / ₁₆	7 ¹ / ₈	3 ¹ / ₁₆	1	1 ¹ / ₁₆	29.843	11 ¹ / ₈	10 ¹⁵ / ₁₆
RDL33	8.750	13 ³ / ₄	2	9.384	1 ¹ / ₄	3.375	6 ¹ / ₄	7 ¹ / ₈	3.755	1	19 ¹³ / ₁₆	7 ¹ / ₈	5 ¹ / ₈	1	1 ¹ / ₁₆	34.370	12 ³ / ₈	11 ¹ / ₈
RDLJ33	9.375	16 ¹ / ₈	2 ¹ / ₂	10.080	1 ¹ / ₄	3.375	6 ¹ / ₄	7 ¹ / ₈	3.755	1	19 ¹³ / ₁₆	7 ¹ / ₈	5 ¹ / ₈	1	1 ¹ / ₁₆	34.370	12 ³ / ₈	11 ¹ / ₈

Shaft tolerances: 1/2" Ø or less + .000 over 1/2" Ø + .001
 - .0005 over 1/2" Ø - .001

* In case of labyrinth type seals the shaft extension is 1/4 inch shorter.

Keys in shaft extensions as per USAS B17.1-1967.
 Shafts are always supplied with keys attached.



Dimensions in inches, not committal.
 Certified drawings upon request.

97 R1D 3300 Z4

C23